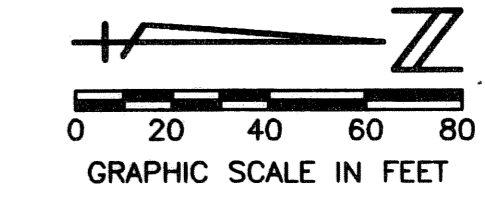


MIRASOL PARCEL TWENTY-ONE

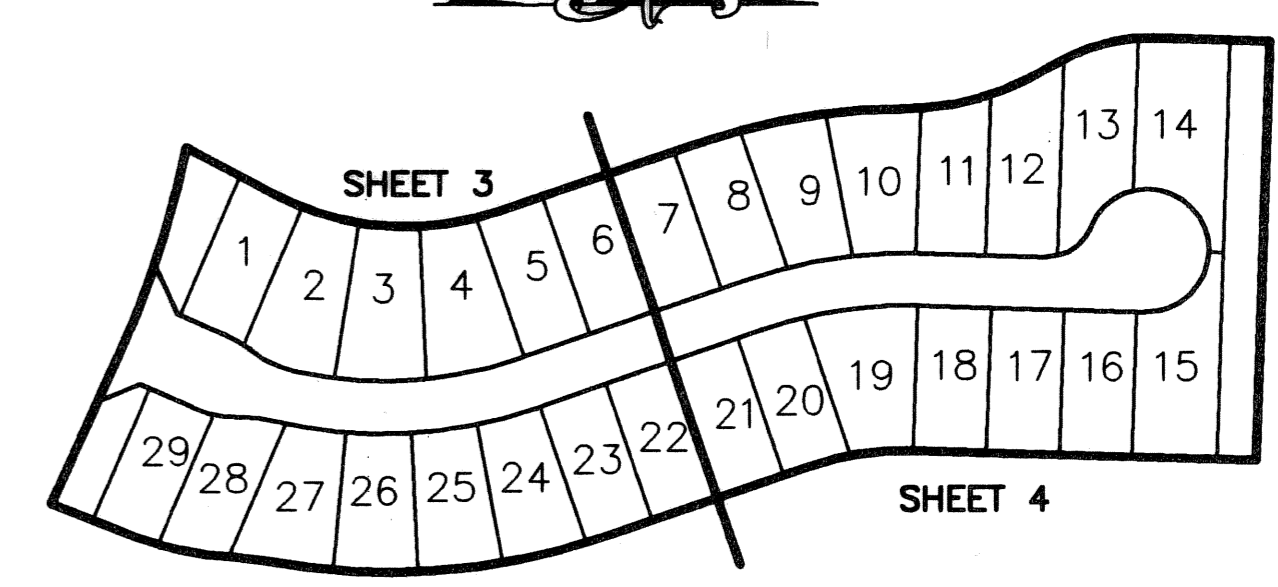
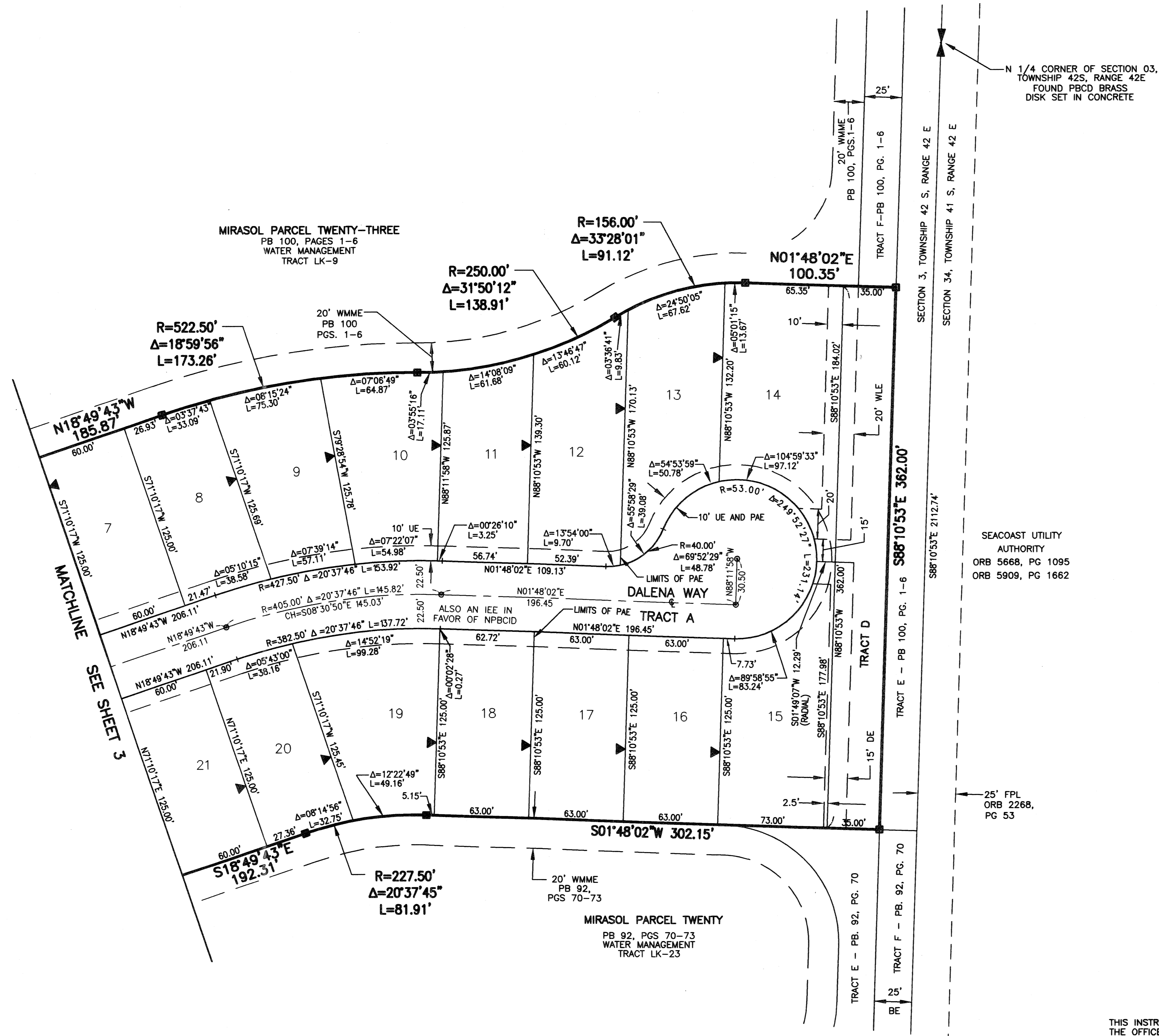
PART OF MIRASOL P.C.D.
BEING IN SECTION 03, TOWNSHIP 42 SOUTH, RANGE 42 EAST,
CITY OF PALM BEACH GARDENS,
PALM BEACH COUNTY, FLORIDA
SHEET 4 OF 4

122

STATE OF FLORIDA
COUNTY OF PALM BEACH
THIS PLAT WAS FILED FOR
RECORD _____
THIS _____ DAY OF _____
AD, 2005 AND DULY RECORDED
IN PLAT BOOK _____ ON PAGES
_____ AND _____
SHARON R. BOCK,
CLERK & COMPTROLLER
BY: _____, D.C.



CIRCUIT COURT SEAL



SHEET LOCATION MAP
NOT TO SCALE

- LEGEND**
- Δ CENTRAL (DELTA) ANGLE
 - BE BUFFER EASEMENT
 - CH CHORD BEARING AND DISTANCE
 - DE DRAINAGE EASEMENT
 - FPL FLORIDA POWER AND LIGHT
 - IEE INGRESS-EGRESS EASEMENT
 - L ARC LENGTH
 - NPBCID NORTHERN PALM BEACH COUNTY IMPROVEMENT DISTRICT
 - ORB OFFICIAL RECORD BOOK
 - PAE PEDESTRIAN ACCESS EASEMENT
 - PB PLAT BOOK
 - PCD PLANNED COMMUNITY DEVELOPMENT
 - PG(S) PAGE(S)
 - R RADIUS
 - UE UTILITY EASEMENT
 - WLE WATER LINE EASEMENT
 - WMME WATER MANAGEMENT MAINTENANCE EASEMENT
 - PERMANENT REFERENCE MONUMENT FOUND LB 048 (4" x 4" CONCRETE)
 - PERMANENT REFERENCE MONUMENT SET LB 048 (4" x 4" CONCRETE)
 - PERMANENT CONTROL POINT SET LB 048
 - ⊕ CENTERLINE
 - ⚡ ZERO LOT LINE INDICATOR
 - ▲ 1/4 SECTION CORNER

SEACOAST UTILITY
AUTHORITY
ORB 5668, PG 1095
ORB 5909, PG 1662

25' FPL
ORB 2268,
PG 53

THIS INSTRUMENT WAS PREPARED BY MANUEL A. GUTIERREZ, P.S.M. IN THE OFFICES OF MOCK, ROOS & ASSOCIATES, INC., 5720 CORPORATE WAY, WEST PALM BEACH, FLORIDA 33407.

| | |
|--------------|--------------|
| SCALE: | 1"=40' |
| P.A. NO.: | 99370.00 |
| DATE: | APRIL 2004 |
| DRAWING NO.: | 42-42-03-124 |

MOCK • ROOS
ENGINEERS • SURVEYORS • PLANNERS
5720 Corporate Way, West Palm Beach, Florida 33407
(561) 683-3113, fax 478-7248

MIRASOL PARCEL TWENTY-ONE
PART OF MIRASOL P.C.D.
BEING IN SECTION 03,
TOWNSHIP 42 SOUTH, RANGE 42 EAST,
CITY OF PALM BEACH GARDENS,
PALM BEACH COUNTY, FLORIDA

SHEET 4 OF 4

REVISD: 05-02-05
CADD FILE:
S:\top\topo21\dwg\p21rp02.dwg